



TacticalWalls®

Please visit us at tacticalwalls.com for more information

1450M Bundle Instruction Manual With RFID Locking

**Read all information before you begin your
TACTICAL WALLS insert installation.*



540.298.8906

Please read carefully!

Installing a TACTICAL WALLS insert can be a very simple project but there are several factors you need to understand. Our inserts were designed to work with “standard” pine 2x4 construction that was framed 16” on center. Does this mean that our insert will not work otherwise? NO, not necessarily. However, the installation process for any other type of wall will require other instructions and likely other processes as well. Because they were designed specifically for 16” on center framing with “standard” pine 2x4’s that is the only process our installation instructions will cover. Installing our insert in any other type of wall is done at your own risk. TACTICAL WALLS does **NOT** advise you to attempt installing in any other type of wall.

Walls can be a mystery. Our inserts work amazing when installed during new construction because you know exactly where wires and pipes are run. But chances are you have several walls in your home that will work great with our inserts, and chances are those walls have been finished for a long time. Here are a few things you need to consider and look for before you even pick up a single tool. Find out what is running in your wall. Are there pipes? Electrical wiring? Ducts? Is there a brick wall that has been drywalled or paneled over? Look for tell tale signs of potential obstacles. Receptacles, switches, and vents. If you see any on EITHER side of the wall you wish to use you are going to have to figure out how things are run inside your wall. Taking some time at this step to ensure your wall is clear and suitable will save you much frustration, and danger when you attempt to cut your hole.

⚠ CAUTION

Make sure you are **ABSOLUTELY** certain that your wall is free and clear before you even begin. Please take your time and be **SAFE**. **BE SURE YOUR WALL SPACE IS CLEAR BEFORE BEGINNING!** TACTICAL WALLS IS NOT responsible for your new hole or your injury if you do not heed our warnings and advice. **MAKE SURE YOUR WALL IS CLEAR OF ALL OBSTACLES BEFORE CUTTING.**

*As a gun owner TACTICAL WALLS sincerely hopes you have a great grasp of the concept of **SAFETY FIRST**. The installation of our inserts is a multi-step process. Start to finish will be anywhere from 30 minutes to ALL weekend depending on your available tools, and your skills with said tools. Keep in mind, TACTICAL WALLS suggests you use the proper tools, and you use those tools only in a manner consistent with the manufactures intended uses. The proper tools can make the job quick, simple, enjoyable, but most importantly **SAFE**. So do yourself a favor and use the proper tools.

⚠ WARNING

Failure to follow and comply with these instructions could result in INJURY or even DEATH!

*Tools that should be considered for safe proper installation. Stud finder, tape measure, level, pencil, keyhole saw, jigsaw, sawzall, or circular saw, drill/driver, inspection mirror, flashlight/work light.

*Now that TACTICAL WALLS has cautions and disclaimers out of the way, here are the steps to ensure you get the best results. Please read and follow **ALL** of the written disclaimers and installation instructions before beginning.

DO NOT INSTALL BATTERY FOR YOUR RFID LOCK UNTIL STEP 12 IS COMPLETED!!!

***Step 1**

Get all of the proper tools to complete the job. Do not forget about your proper protective gear. long sleeve shirt, gloves, goggles or safety glasses, dust mask or respirator, and ear plugs if using power tools. Remove all jewelry, ring's, necklaces, and earrings.

***Step 2** **NOTICE**

CONFIRM YOUR WALL SPACE IS CLEAR AND EMPTY!! Failure to do so could result in INJURY or DEATH!

***Step3**

Clear your work area around your desired install location. Cover any furniture with a tarp, drop cloth, or painters plastic to aid in a quick easy clean up.

***Step 4**

Use a stud finder to locate the space between two studs. Confirm you have 14.5" between the two stud edges before making and cutting your walls.

See Figures 1,2 and 3

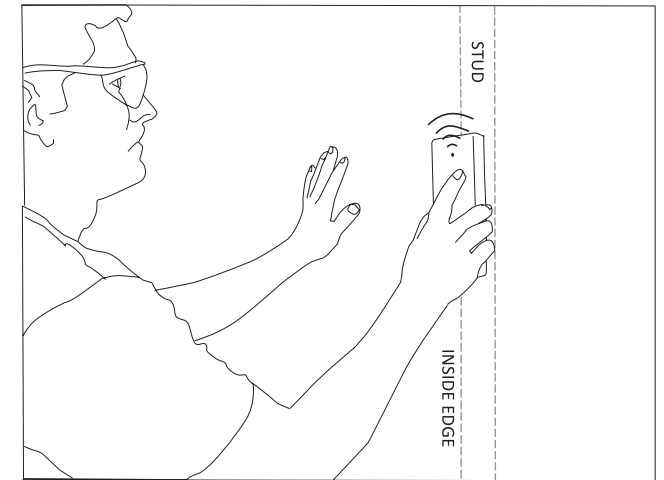


Figure 1

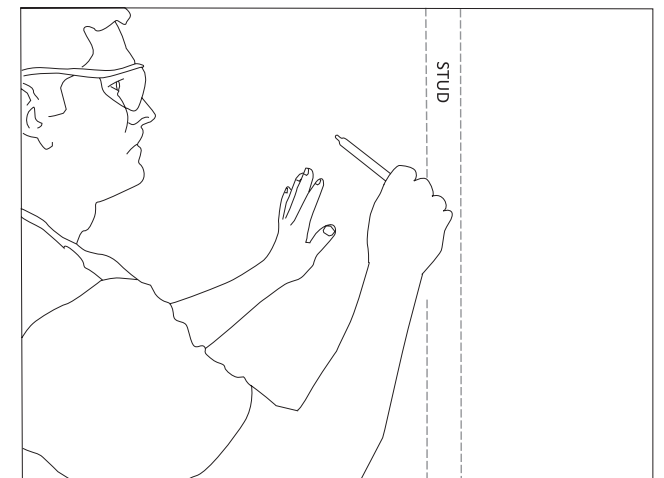


Figure 2

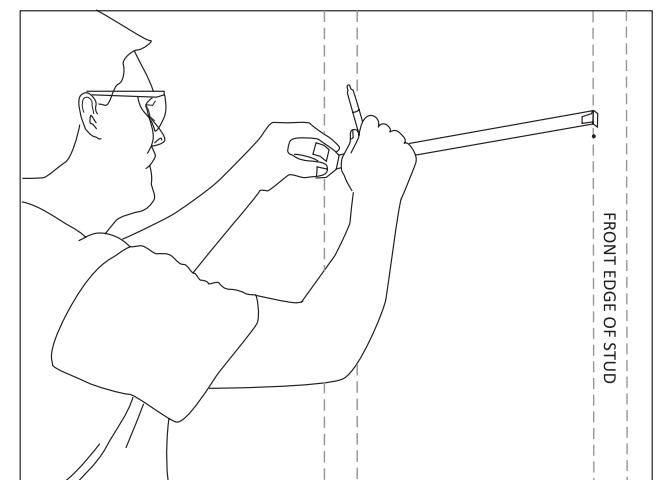


Figure 3

****Step 5***

Measure from stud to stud for your width of hole. The size you need to make your hole between the studs in height is 51". Use your level to ensure you hole is level and use a pencil to create your marks on the wall between your two studs to create a large vertical rectangle that will need to be cut out.

See Figure 4

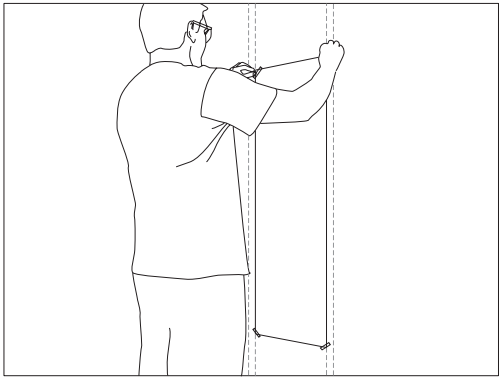


Figure 4

****Step 6***

NOTICE

Before cutting the entire wall open, TACTICAL WALLS recommends that you cut a small hole within the area that will be the full size hole. This is done to check and confirm your wall is truly clear, and there are no surprises waiting for you. It is MUCH easier to patch a small hole than to repair a large hole because you got ahead of yourself. **Do not skip this step!**

****Step 7***

Once you are sure there is no other obstacles inside your desired cut area, cut out the full rectangle that you have marked with your pencil. Remove drywall cut-out away from wall. See Figures 5 and 6

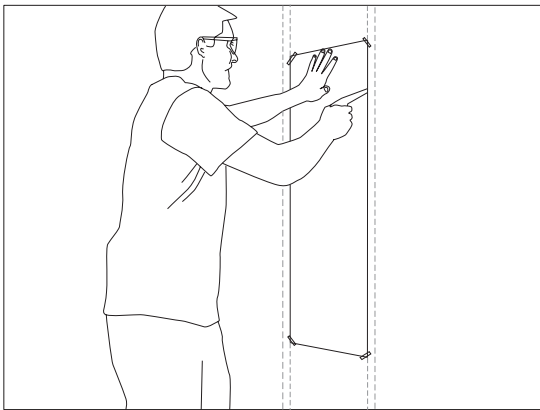


Figure 5

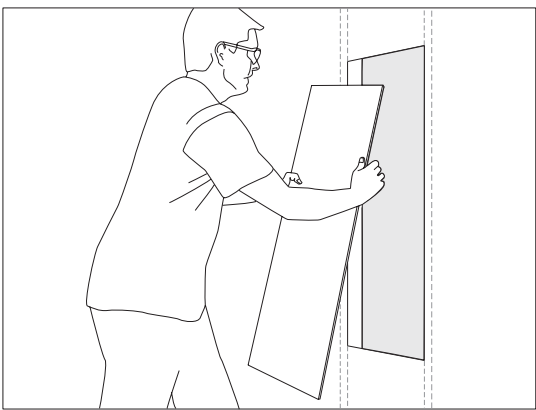


Figure 6

****Step 8***

Now you are ready to install your concealment cover. Lay the mirror on the floor and slide it open. The drawer slides will come completely open if you depress the small plastic tab and slide the two halves of the slide apart. With the two halves apart, you can now mount the back half (the half that will remain stationary on the wall) with supplied assembly screws. See Figures 7

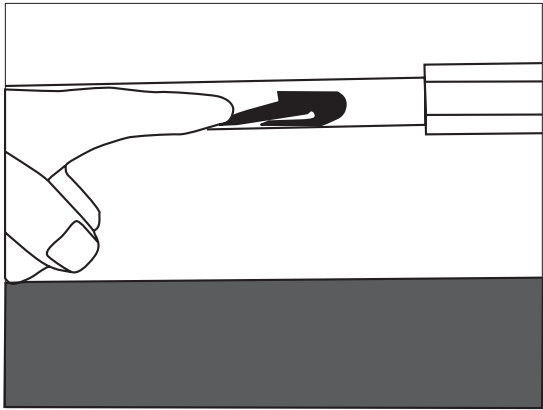


Figure 7

****Step 9***

Hold the back frame of your mirror to the wall fitting of the insert open hole area. This is where a friend will come in handy. While you are holding the frame in place against a wall, confirm that the frame is square and level. Locate the (6) mounting holes in the frame. They are 16" apart and should be centered on the two studs in your wall. While holding the frame in place, install the (6) supplied screws into the studs. With the screws installed the frame is now self supporting. If you did not hit a stud you may need to adjust your mirror right or left as necessary. Be sure to anchor your mirror frame to the studs. The mirrors are heavy and if only screwed into drywall over time, they WILL fail, possibly causing damage and injury. So make sure the frame is screwed to the studs. See Figures 8

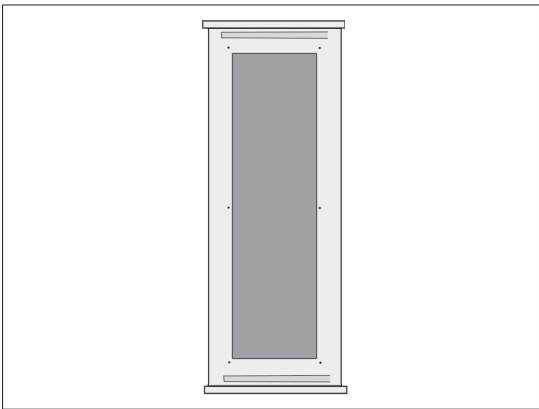


Figure 8

****Step 10***

Slide your new insert into the hole you just cut. See Figure 9. LOOKS good doesn't it? Fight the urge to start putting guns in it and taking pictures and finish the job.



Figure 9

****Step 11***

Use the supplied screws to secure the inserts to the two studs that run up the sides of the insert. See Figure 10



Figure 10

****Step 12***

Use the supplied screws and shelf to secure at a desired location within your insert. See Figure 11



Figure 11

Features & Specifications of your TW-EL1 RFID Lock

- Simple to program without PC and software
- 50 users per lock capability
- Flexible, project-based programming and functions available
- Minimum 30,000 latch openings per life of battery (Lithium battery included)
- Low battery audible warning
- Fail unlocked when battery fails
- Audible signal upon card presentation

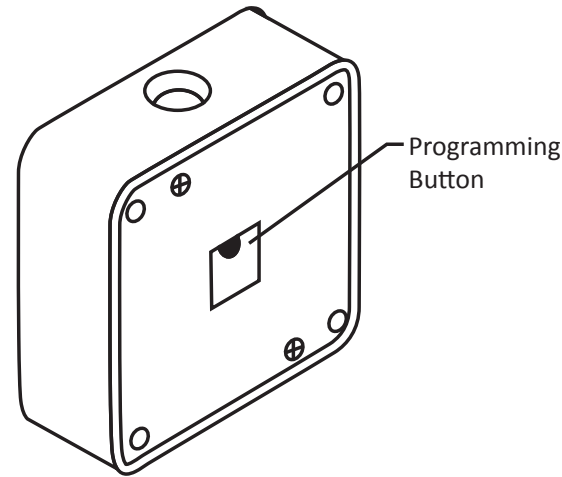
| Specifications | |
|-----------------------------|---|
| Dimensions | Lock: 7/8”D x 2-3/8”W x 2-3/8”L (21.8mm x 60.1mm x 60.1mm) Alarm Pin: 3/4”D x 1”W x 2-11/32”L (19mm x 25.4mm x 59.7mm) |
| Cycle Rating (Battery Life) | 30,000 |
| Operating Temperature | 14 °F to 140°F (-10°C to 60°C) |
| Power Requirements | 3V - Lithium Battery |
| Low Battery Warning | Audible Alarm will sound for 10 seconds. Fail Unlocked when battery power fails. |

Programming Instructions for your TW-EL1 RFID Lock

***Please install your lithium battery that was provided with your bundle.
Your Tactical Walls RFID lock comes initialized to your programming card and key cards from our facility. It is NOT necessary to program lock when received. The programming instructions below are to introduce a new programming card or program additional keys.***

Initializing the lock:

1. Press the programming button on the back of the lock. See diagram
2. Lock will make a rapid beeping sound. Present the programming card to lock within three seconds.
3. Two short tones indicate the programming card has been initialized.
4. Multiple locks can be programmed using the same programming card.



Adding User Cards or Fobs:

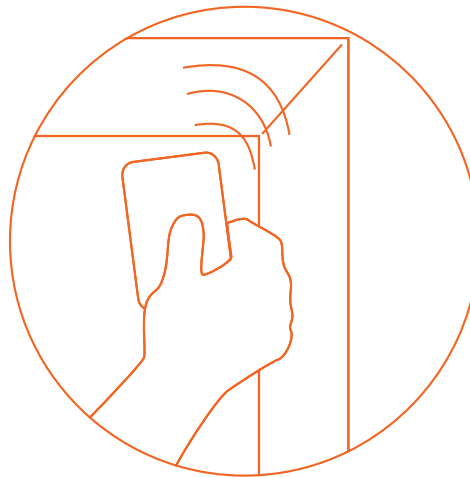
1. Present the programming card to lock.
2. Lock will make a rapid beeping sound. Present a user card/fob to the lock within three seconds.
3. Two tones will indicate that the user card/fob has been accepted.
4. Lock can now be opened with this card/fob.

Deleting a User Card/Fob:

1. Present the programming card to the lock.
 2. Lock will make a rapid beeping sound. Present user card/fob to the lock within three seconds.
 3. Four rapid tones indicated the card/fob has been successfully removed.
- Note: If user card/fobs have been lost all users will need to be deleted and re-enrolled.

Deleting All User Cards/Fobs:

1. Present programming card to lock.
2. Lock will make a rapid beeping sound. Present and hold programming card to lock.
3. Sixteen beeps will sound followed by one long tone.
4. All user cards/fobs have been deleted.



****Step 13***

With the back frame securely mounted to the wall, you are now ready to install the front concealment frame and slides. Please note: the slides on the rear frame have some adjustment in them. If you slide the front frame on and it is not sitting completely square on the rear frame you may need to adjust the slides on the rear frame. You can do this by slightly loosening the rear slide screws and adjusting the frame as necessary. In extreme cases if it is still not square you may even have to adjust the slide of the back of the concealment frame itself. Regardless, whichever slides you adjust, be certain to tighten all screws again before re-assembly. Now that everything is adjusted and square, slide the front concealment frame onto the slides and close your concealment cover.

**Now you can enjoy hiding your awesomeness!*

**Show us yours by taking a picture and posting it on our "Show Us Yours" page on our website at tacticalwalls.com.*