

*\*Read all information before you begin your  
TACTICAL WALLS insert installation.*



**540.298.8906**

*Please read carefully!*

Installing a *TACTICAL WALLS* insert can be a very simple project but there are several factors you need to understand. Our inserts were designed to work with “standard” pine 2x4 construction that was framed 16” on center. Does this mean that our insert will not work otherwise? NO, not necessarily. However, the installation process for any other type of wall will require other instructions and likely other processes as well. Because they were designed specifically for 16” on center framing with “standard” pine 2x4’s that is the only process our installation instructions will cover. Installing our insert in any other type of wall is done at your own risk. *TACTICAL WALLS* does **NOT** advise you to attempt installing in any other type of wall.

Walls can be a mystery. Our inserts work amazing when installed during new construction because you know exactly where wires and pipes are run. But chances are you have several walls in your home that will work great with our inserts, and chances are those walls have been finished for a long time. Here are a few things you need to consider and look for before you even pick up a single tool. Find out what is running in your wall. Are there pipes? Electrical wiring? Ducts? Is there a brick wall that has been drywalled or paneled over? Look for tell tale signs of potential obstacles. Receptacles, switches, and vents. If you see any on EITHER side of the wall you wish to use you are going to have to figure out how things are run inside your wall. Taking some time at this step to ensure your wall is clear and suitable will save you much frustration, and danger when you attempt to cut your hole.

### ⚠ CAUTION

Make sure you are **ABSOLUTELY** certain that your wall is free and clear before you even begin. Please take your time and be **SAFE**. **BE SURE YOUR WALL SPACE IS CLEAR BEFORE BEGINNING! TACTICAL WALLS IS NOT** responsible for your new hole or your injury if you do not heed our warnings and advice. **MAKE SURE YOUR WALL IS CLEAR OF ALL OBSTACLES BEFORE CUTTING.**

\*As a gun owner *TACTICAL WALLS* sincerely hopes you have a great grasp of the concept of **SAFETY FIRST**. The installation of our inserts is a multi-step process. Start to finish will be anywhere from 30 minutes to ALL weekend depending on your available tools, and your skills with said tools. Keep in mind, *TACTICAL WALLS* suggests you use the proper tools, and you use those tools only in a manner consistent with the manufactures intended uses. The proper tools can make the job quick, simple, enjoyable, but most importantly **SAFE**. So do yourself a favor and use the proper tools.

### ⚠ WARNING

**Failure to follow and comply with these instructions could result in INJURY or even DEATH!**

\*Tools that should be considered for safe proper installation. Stud finder, tape measure, level, pencil, keyhole saw, jigsaw, sawzall, or circular saw, drill/driver, inspection mirror, flashlight/work light.

\*Now that *TACTICAL WALLS* has cautions and disclaimers out of the way, here are the steps to ensure you get the best results. Please read and follow **ALL** of the written disclaimers and installation instructions before beginning.

### \*Step 1

*Get all of the proper tools to complete the job. Do not forget about your proper protective gear. long sleeve shirt, gloves, goggles or safety glasses, dust mask or respirator, and ear plugs if using power tools. Remove all jewelry, ring's, necklaces, and earrings.*

### \*Step 2 NOTICE

*CONFIRM YOUR WALL SPACE IS CLEAR AND EMPTY!! Failure to do so could result in INJURY or DEATH!*

### \*Step 3

*Clear your work area around your desired install location. Cover any furniture with a tarp, drop cloth, or painters plastic to aid in a quick easy clean up.*

### \*Step 4

*Use a stud finder to locate the space between two studs. Confirm you have 14.5" between the two stud edges before making and cutting your walls.*

*See Figures 1,2 and 3*

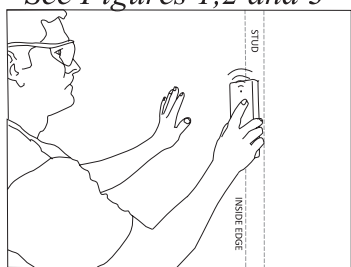


Figure 1

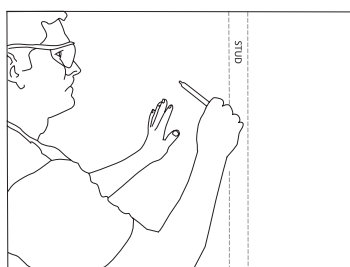


Figure 2

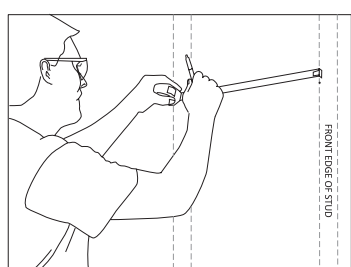


Figure 3

### \*Step 5

*Once studs have been located, choose desired height of your 1420. Using a level, mark a horizontal line from stud to stud that would be the top of your opening for your insert(s). Measure down vertically 21 inches to mark the bottom of your opening for the insert(s). Total opening space for your inserts should be from stud to stud x 21 inches in height. See Figure 4*

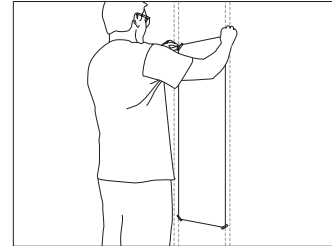


Figure 4

### \*Step 6 NOTICE

*Before cutting the entire wall open, TACTICAL WALLS recommends that you cut a small hole within the area that will be the full size hole. This is done to check and confirm your wall is truly clear, and there are no surprises waiting for you. It is MUCH easier to patch a small hole than to repair a large hole because you got ahead of yourself. Do not skip this step!*

### \*Step 7

*Once you are sure there is no other obstacles inside your desired cut area, cut out the full rectangle that you have marked with the template. Remove drywall cut-out away from wall. See Figures 5 and 6*

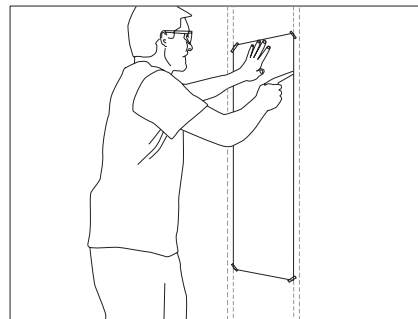


Figure 5

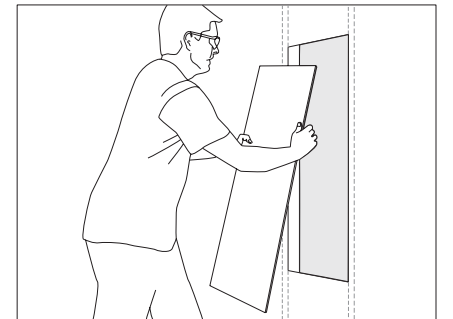


Figure 6

### \*Step 8

*Now you are ready to install your concealment cover. Lay the mirror on the floor and slide it open. The drawer slides will come completely open if you depress the small plastic tab and slide the two halves of the slide apart. With the two halves apart, you can now mount the back half (the half that will remain stationary on the wall) with supplied assembly screws. See Figures 7*

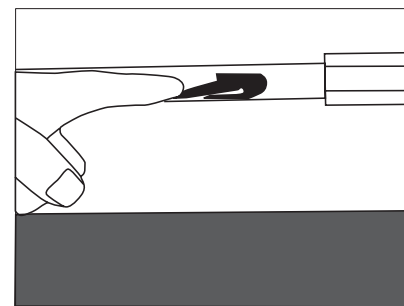


Figure 7

### \*Step 9

*Hold the back frame of your mirror to the wall fitting of the insert open hole area. This is where a friend will come in handy. While you are holding the frame in place against a wall, confirm that the frame is square and level. Locate the (6) mounting holes in the frame. They are 16" apart and should be centered on the two studs in your wall. While holding the frame in place, install the (6) supplied screws into the studs. With the screws installed the frame is now self supporting. If you did not hit a stud you may need to adjust your mirror right or left as necessary. Be sure to anchor your mirror frame to the studs. The mirrors are heavy and if only screwed into drywall over time, they WILL fail, possibly causing damage and injury. So make sure the frame is screwed to the studs. See Figures 8*

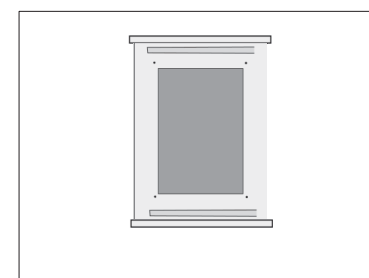


Figure 8

### \*Step 10

*Slide your new insert into the hole you just cut. See Figure 9. LOOKS good doesn't it? Fight the urge to start putting guns in it and taking pictures and finish the job.*

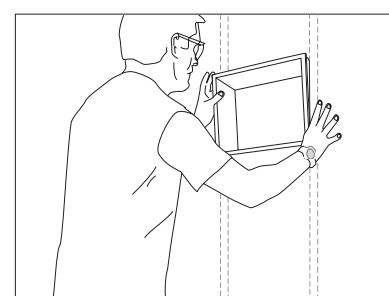


Figure 9

***\*Instructions Continued On Other Side***



# Tactical Walls®

Please visit us at [tacticalwalls.com](http://tacticalwalls.com) for more information

540.298.8906



***Please read carefully!***

## ***\*Step 11***

Use the supplied screws to secure the inserts to the two studs that run up the sides of the insert. See Figure 10

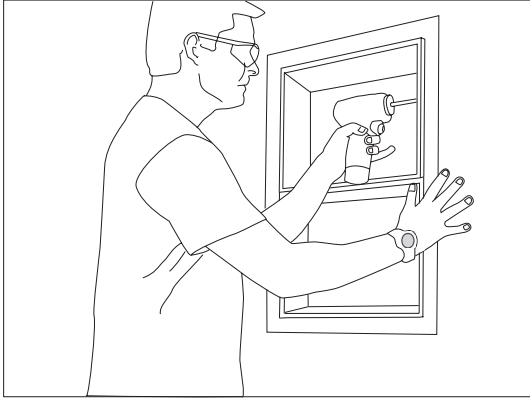


Figure 10

## ***\*Step 12***

With the back frame securely mounted to the wall, you are now ready to install the front concealment frame and slides. Please note: the slides on the rear frame have some adjustment in them. If you slide the front frame on and it is not sitting completely square on the rear frame you may need to adjust the slides on the rear frame. You can do this by slightly loosening the rear slide screws and adjusting the frame as necessary. In extreme cases if it is still not square you may even have to adjust the slide of the back of the concealment frame itself. Regardless, whichever slides you adjust, be certain to tighten all screws again before re-assembly. Now that everything is adjusted and square, slide the front concealment frame onto the slides and close your concealment cover.

*\*Now you can enjoy hiding your awesomeness!*

*\*Show us yours by taking a picture and posting it on our "Show Us Yours" page on our website at [tacticalwalls.com](http://tacticalwalls.com).*